



[www.pro-cnc.com.pl](http://www.pro-cnc.com.pl)

PRODUCTION  
SPECIALIZED  
MACHINES

ul. Głudna 37, 05-620 Błędów  
+(48) 538 358 588  
biuro@pro-cnc.com.pl



# ***FAST-CUT***

## ***SWEeper***

The PRO-CNC **sweeper** thoroughly sweeps branches from between the rows, which allows you to maintain perfect cleanliness in the **orchard**.

The machine is powered by a **hydraulic motor** with additional bearings and brushes made of abrasion-resistant material.

Both the angle and the working height are adjustable, which gives an amazing effect.

The device can be **single-sided or double-sided**.

### MAIN ADVANTAGES OF WORKING WITH **PRO-CNC**

- reduction of costs and working time
- speed of the procedure in the orchard
- easier harvesting from the fruit-bearing wall
- improvement of fruit quality

## FAST-CUT SWEEPER



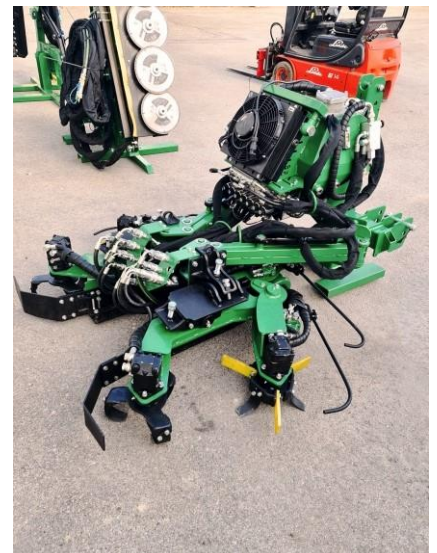
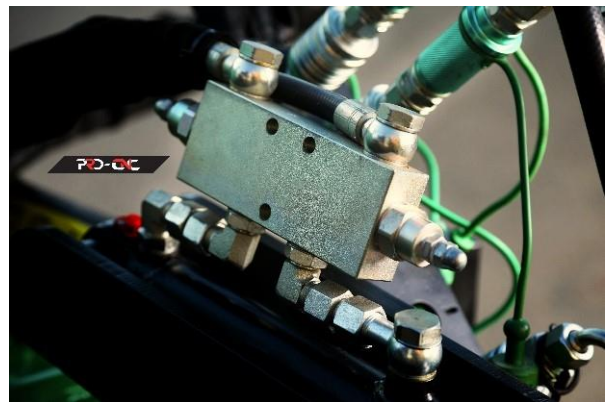


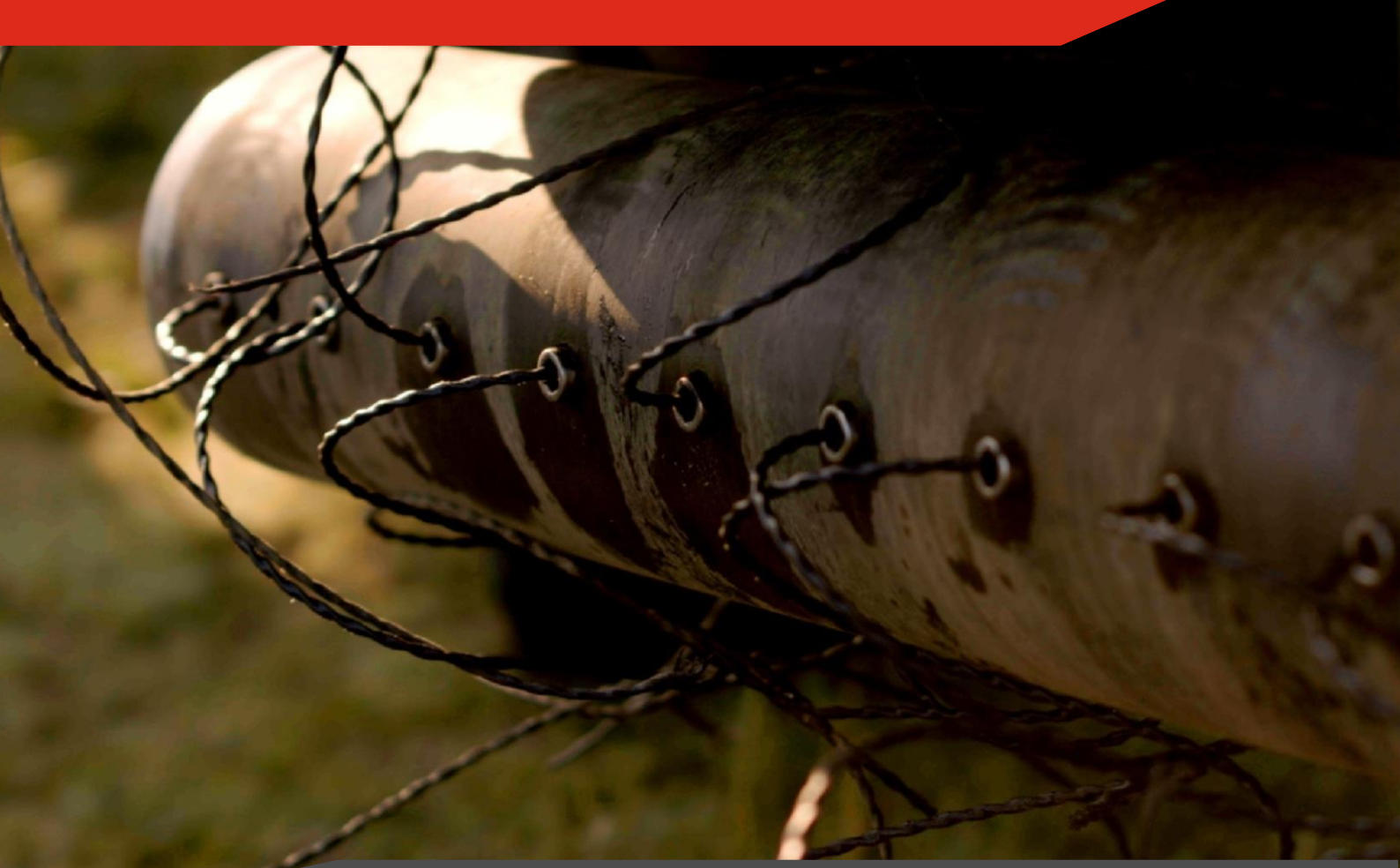
# ***FAST-CUT***

## ***DOUBLE-HEAD MILLING***

FAST-CUT **Double-head milling** designed for installation on the front, rear and side of the tractor. It can be **one or two sided**. With this machine you can **mechanically control** weeds under and between trees. The machine is intended for **biological cultivation** of soil between trees. **Grass and weeds** are pulled out of the ground, roots and all, and then lightly pressed into the soil. **A row of trees** can be processed very flat and at an even depth because the machine can be adjusted from **0 to 15 cm in depth**. Slow-running blades support the soil's **natural crumbling structure** and nutrient production. **The rear rotor** ensures even distribution of soil across **the row of trees**, preventing soil movement. This also makes the machine suitable for working on slopes. **PRO-CNC machines** also work well on newly planted rows of trees and on dry, hard and rocky soil. **The cultivator** has high efficiency at a driving speed of **4 km/h**.

# FAST-CUT DOUBLE-HEAD MILLING





# ***FAST-CUT***

## ***STRING TRIMMER***

The FAST-CUT **string trimmer** is designed for **mechanical control** of weeds in between rows.

The machine is **popular in organic farming**.

Specially refined **design**, the device does not **damage tree trunks**.

The special line used and the adjusted engine speed ensure efficient work and a **satisfactory end result**.

Single-sided and **double-sided** options are available.

## FAST-CUT DOUBLE-HEAD STRING TRIMMER





# ***FAST-CUT ROLHAK***

***WITH A WEEDING STAR***

FAST-CUT rolhak with a **weeding star** is designed for mechanical destruction of weeds **in orchards** and crops where side weeding is required. **A rolhak** is placed in front of the weeder star, the soil is loosened before weeds are thrown away, which increases the effectiveness of weeding. **The hydraulic arm** width adjustment function, it can be used in crops with different row widths. Additionally, **the cultivator** can be equipped with a sensor that automatically reduces the working width of the machine by narrowing the arm when it encounters an obstacle. **The device is mounted on a three-point suspension system** at the front or rear of the tractor and is powered **by the tractor's hydraulics**.





## FAST-CUT ROLHAK

